

Z8 Encore!™ Flash Microcontrollers Development Kit



Z8 Encore!™ MCU Development Kit Contents:

Hardware

- Evaluation Board
- Target Module Interface Board
- RS-232 DB9 Serial Cable
- 9VDC Universal Power Supply

Software

- ZDS II IDE
- ANSI C-Compiler
- Sample Code
- Device Driver Software

Documentation/CD-ROM

- Quick Start Guide
- Development Kit User Manual
- ZDS II User Manual
- eZ8 CPU User Manual
- Product Specification
- Product Briefs
- Application Notes
- Flyer
- Product Line Card
- Programmer's Quick Reference Sheet

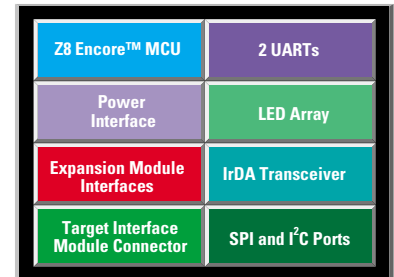
The Z8 Encore!™ Microcontroller (MCU) Development Kit is a general-purpose platform that allows design engineers to evaluate the capabilities and operation of the Z8 Encore!™ family of microcontrollers and provides tools to shorten the development cycle. Included with the Development Kit is a free full-version ANSI C-Compiler and a Target Interface Module board that interfaces with the on-chip debugger converting a one-wire interface to a two-wire RS-232-like interface. All the necessary hardware, software tools, and technical documentation are included, to provide a complete solution at minimal cost.

Evaluation Board

The evaluation board demonstrates the complete peripheral set of the Z8 Encore!™ family of Flash microcontrollers and serves as a prototyping platform. Use the evaluation board to review the features of the Z8 Encore!™ MCU or begin an application design immediately.

Features:

- Z8 Encore!™ Flash MCU
 - 20MHz performance
 - 12-channel, 10-bit A/D Converter
 - 3-channel DMA
 - Up to 64KB of Flash
 - Up to 4KB SRAM
 - SPI and I²C Ports
 - Two 9-bit UARTs
 - 24 Interrupts
 - Four 16-bit Timers with PWMs
 - Single-pin, On-chip Debugger
- RS-232 Connectors (2)
- RS-485 Interface
- IrDA Port
- Modem Socket
- Expansion Module Headers
- Temperature Sensor with SPI Interface
- External Voltage Reference for A/D Converter
- I²C Configuration IC
- Z8 Encore!™ Target Module Interface Board
- Push Buttons (3)
- LED Matrices (4)



Z8 Encore!™
Evaluation Board Block Diagram



Z8 Encore!™

Flash Microcontrollers

Development Kit

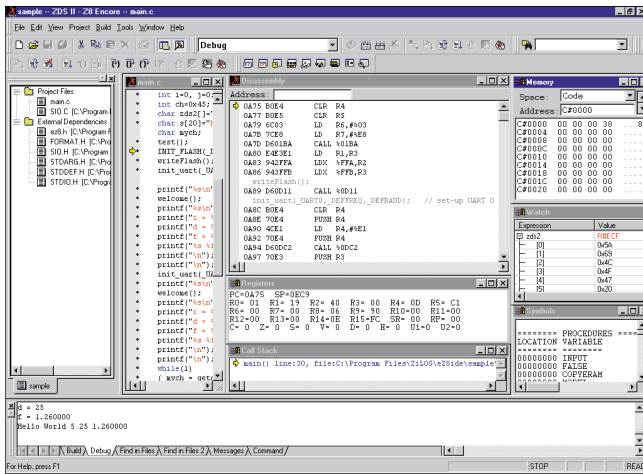


ZDS II Integrated Development Environment

ZiLOG Developer Studio II Integrated Development Environment (IDE) is a complete suite of software tools that supports development with the Z8 Encore!™ MCU. Combining an easy-to-use Windows-based GUI with multithreading capability, ZDS II provides an environment that simplifies code compilation and development. A language sensitive editor, project manager, compiler, assembler, linker, librarian, and debugger are included in ZDS II.

C-Compiler

A full version ANSI C-Compiler is included in this kit at no additional cost. Simplify application software development and reduce time-to-market. The C-Compiler supports a powerful configurable optimizer allowing code to be optimized for speed or size.



Z8 Encore!™ MCU ZDS II IDE GUI

Z8 Encore!™ Flash MCU Supported Parts

Device	Memory		Core Speed (MHz)	I/O Lines	Interrupts	16-Bit Timers	PWMs	10-Bit A/D Channels	DMA Controller	UARTs	Operating Voltage	Pin Count
	Flash (Bytes)	RAM (Bytes)										
Z8F640X	64K	4K	20	60	24	4	4	12	yes	2	3.0V to 3.6V	40,44,64,68,80
Z8F480X	48K	4K	20	60	24	4	4	12	yes	2	3.0V to 3.6V	40,44,64,68,80
Z8F320X	32K	2K	20	46	24	4	4	12	yes	2	3.0V to 3.6V	40,44,64,68
Z8F240X	24K	2K	20	46	24	4	4	12	yes	2	3.0V to 3.6V	40,44,64,68
Z8F160X	16K	2K	20	46	24	4	4	12	yes	2	3.0V to 3.6V	40,44,64,68



Z8 Encore!™ MCU Support Tools

Z8 Encore!™ MCU Development Kit

Part number: Z8ENCORE000ZCO

Description: Complete development kit with evaluation board, ZDS II IDE, ANSI C-Compiler and documentation

For additional support and ordering information visit www.zilog.com/z8encore



For the latest soon to be released ZiLOG Z8 Encore!™ parts visit www.zilog.com/z8encore



www.zilog.com